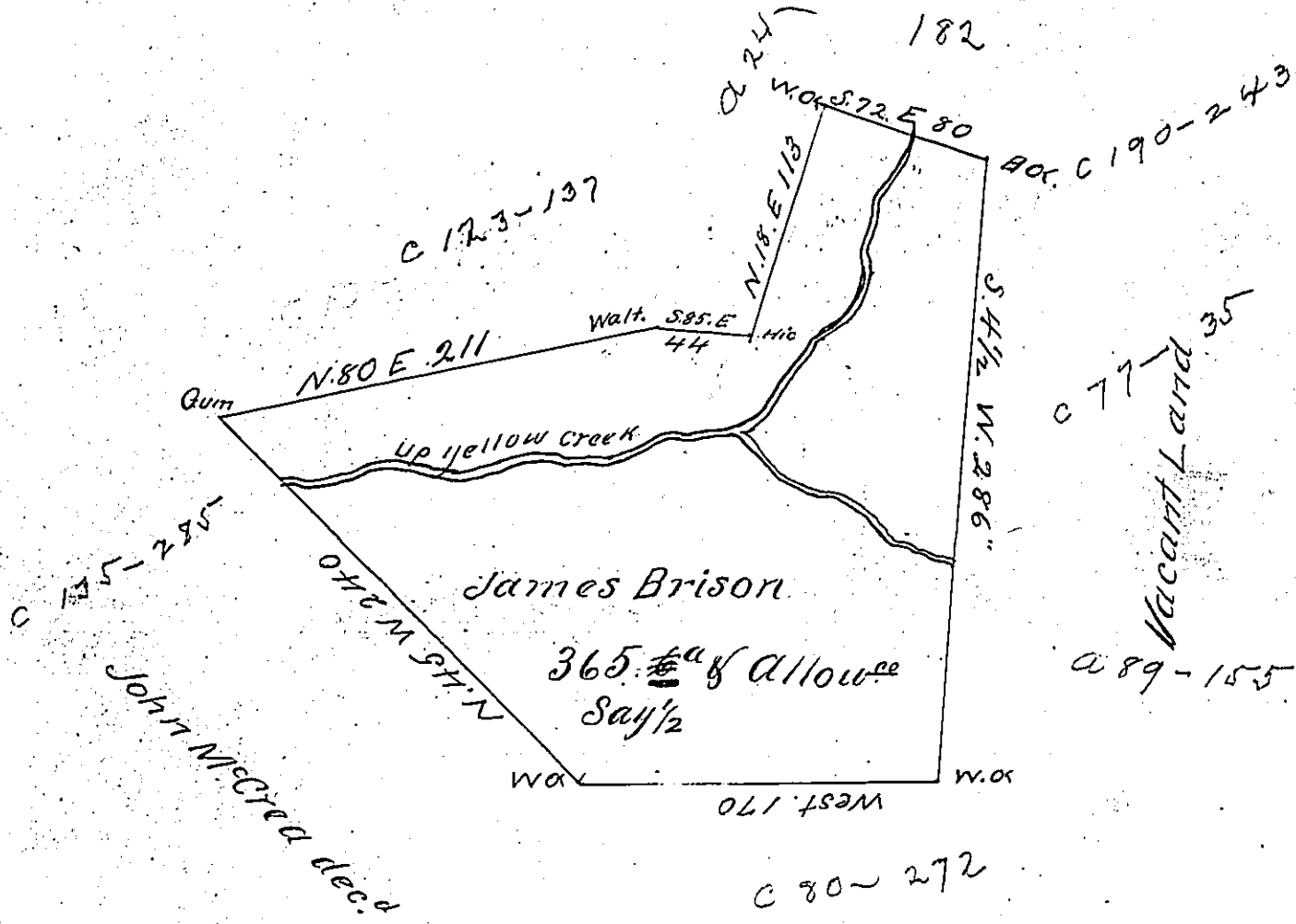


John Hopkins Claim



Surveyed to James Brison 9th day of September 1785 The above described Tract of three hundred & sixty five acres & an half acre of allowance of six p cent. Situate on yellow creek adjoining a claim of John McCrea decd & John Hopkins including the big Elk Lick in Westmorland County By warrant of the 1st day of July 1784

John Elder D & S

John Lukens Esq. S. Genl.

IN TESTIMONY that the above is a copy of the original remaining on file in the Department of Internal Affairs of Pennsylvania, made conformably to an Act of Assembly approved the 16th day of February, 1833, I have hereunto set my Hand and caused the Seal of said Department to be affixed at Harrisburg, this second day of November 1903

Isaac R. Brown
Secretary of Internal Affairs.